

Product features and advantages:

- NR860P/NR1060 is a middle and large front-wheel drive scrubber with dual brushes.
- The garbage storage box in the recovery tank can effectively filter large garbage to avoid the blockage of the drain pipe.
- The whole vehicle adopts modular and compact design, which brings good maneuverability and flexibility.
- The low center of gravity water tank and battery design ensure the whole vehicle higher driving safety and maintenance convenience.
- Integrated waterproof touch panel design, easy for operations such as driving speed control, water flow adjustment, brush lifting/lowering.
- Large-size color LCD screen to achieve equipment parameters visible, convenient for fault diagnosis and maintenance.
- Standard electronic water level indicator for solution/recovery tanks, making level display intuitive and convenient. The recovery tank will automatically alarm and stop when it is full.
- The whole vehicle is equipped with one-button soft start of motor, over-current and under-voltage protection of controller.
- Patented disk brush adopts buckle design, achieving automatic loading and unloading of disk brush with one key.
- One touch ECO model to reduce the energy consumption and noise level, suitable for low noise request scenarios.
- 36V200Ah maintenance-free lead-acid battery ensures to work continuously for 5-6 hours on one charge.



Long working hours



High reliability



High efficiency



Low security risk

Save Labor and money,
for users to save a lot of
labor costs.



NOBLELIFT

www.noblelift.com

NR860P/NR1060 Ride-on Scrubber



NEW / Noblelift Products
ARRIVAL

NOBLELIFT CHINA

Add:528 Changzhou Road,Taihu Sub-district,
Changxing, Zhejiang 313100 China
Tel:86-572-6210817 6210311
Fax:86-572-6210777 6128612
Email:info@noblelift.com
Http:www.noblelift.com www.noblelift.cn



Official website



Our Wechat

NOBLELIFT INTELLIGENT EQUIPMENT CO., LTD



High performance battery
Large capacity maintenance-free lead-acid battery,safe and reliable, long working time.



Control panel
Integrated waterproof touch panel design,easy and fast operation.



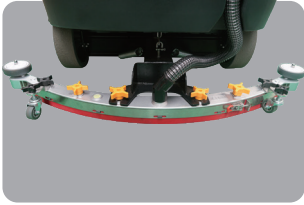
Steering wheel
With steering wheel booster ball,comfortable to operate.



Charging port
External charging port,easy to charge.



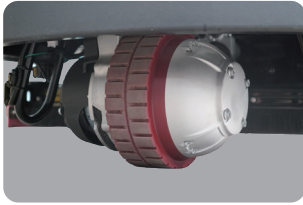
Hatchback recovery tank
Tool-free disassembly design, easy to clean and maintain.



Hygroscopic steak
Wear-resistant adhesive strip arc suction and scrape-shaped design, easy to absorb water without residue.



Water injection port and water level indicator
Display clear water tank water level, large opening water injection port, easy to add clear water.



High-power non-slip front drive wheel
High-power anti-slip drive front wheel, ramp operation will not slope, more safe.

The recommended application of brush/ needle disc for fixing pad:

	Brush			Needle disc+pad		
	Soft brush	Nylon (Standard)	Hard brush	White	Red	Black
Concrete floor		Applicable	Applicable		Applicable	Applicable
Terrazzo floor		Applicable	Applicable		Applicable	Applicable
Tile/ Slate floor	Applicable	Applicable			Applicable	
Marble floor	Applicable	Applicable		Applicable	Applicable	
Plastic floor	Applicable			Applicable	Applicable	
Rubber floor	Applicable			Applicable		

Notes:

1. Soft brush: for cleaning and polishing smooth surface
2. Nylon brush: for general floor cleaning (standard configuration)
3. Hard brush: for removing stubborn dirt on hard ground
4. Needle disc: holding the pad, reducing the wear on the floor; the pad is used together with the needle disc. According to different conditions of the floor, we need to choose different pads in different colors (generally the deeper the color is, the greater the friction on the floor).

Specific application of pads:

- a) White pad: for general cleaning and polishing, marble and smooth floors
- b) Red pad: for general floor cleaning
- c) Black pad: for removing stubborn stains on hard floors

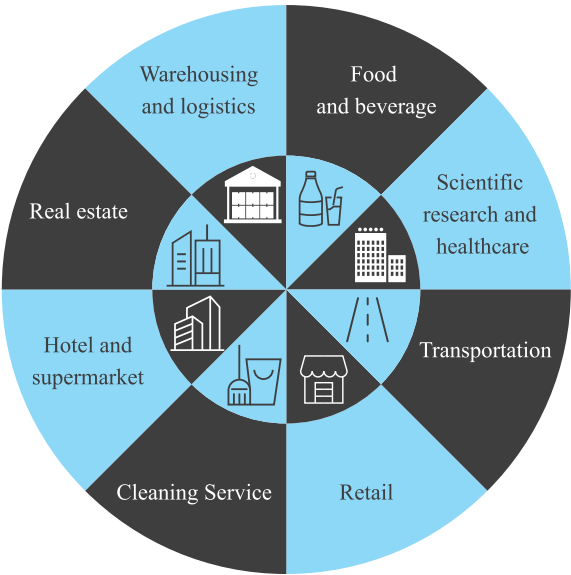
The application of squeezer rubber strip:

	Rubber (Standard)	(PU)
Concrete floor	Applicable	Applicable
Terrazzo floor	Applicable	Applicable
Tile/ Slate floor	Applicable	
Marble floor	Applicable	
Plastic floor	Applicable	Applicable
Rubber floor	Applicable	Applicable

Note:

Polyurethane (PU) strip has strong wear resistance and oil resistance, which is suitable for oil floor conditions, but cutting and tearing performance of PU strip is poor, so it is not suitable for quadrel/ brick or tile floors.

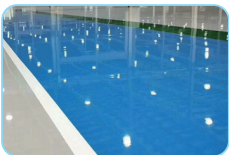
Industries



Scenarios



Epoxy Flooring



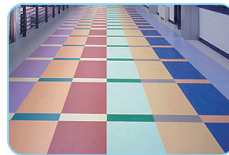
Wear-Resisting Flooring



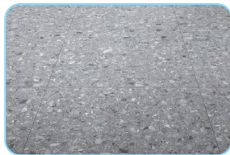
Tile Flooring



Marble Flooring



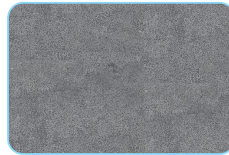
PVC



Terrazzo Flooring



Small Square Brick Flooring



Lime Flooring



NR860P-NR1060 Ride-on Scrubber--Specifications

Model		NR860P	NR1060
TECHNICAL DATA	Cleaning width (mm)	860	1060
	Brush/pad diameter (mm)	2×430	2×530
	Solution tank capacity (L)	200	200
	Recovery tank capacity (L)	210	210
	Clean productivity (m ² /h)	5590	6890
	Continuous working time (h)	5~6	5~6
	Brush motor rated power (W)	2×550	2×550
	Vacuum motor rated power (W)	600	600
	Drive motor rated power (W)	800	800
	Traveling speed (km/h)	0~6.5	0~6.5
	Sound level dB (A)	68±3	68±3
Battery		36V (6×6V200Ah)	36V (6×6V200Ah)
Net weight (without batteries) (kg)		475	477
Product dimensions (mm)		1800×910×1350	1800×1150×1350